

## Product information sheet LINEE-S

Item no. 517591

### Benefits

---



- Elegant design
- Extendable pull-out spray head
- Top lever for easy access
- Ceramic disc control
- High spout for easy filling

### Colours

---



Available colours:

chrome

galvanic chrome

## Planning information

---

- Please note:
- High pressure supply only - requires minimum of 1.0 bar pressure (approx 10 metre head)
- 3/8" BSP connectors required (not supplied)
- Heavy duty metal tap stabilising bracket, fit when required. Item No. 513383
- Height: 281
- Reach: 225
- Base: 46
- Tap hole: ø35

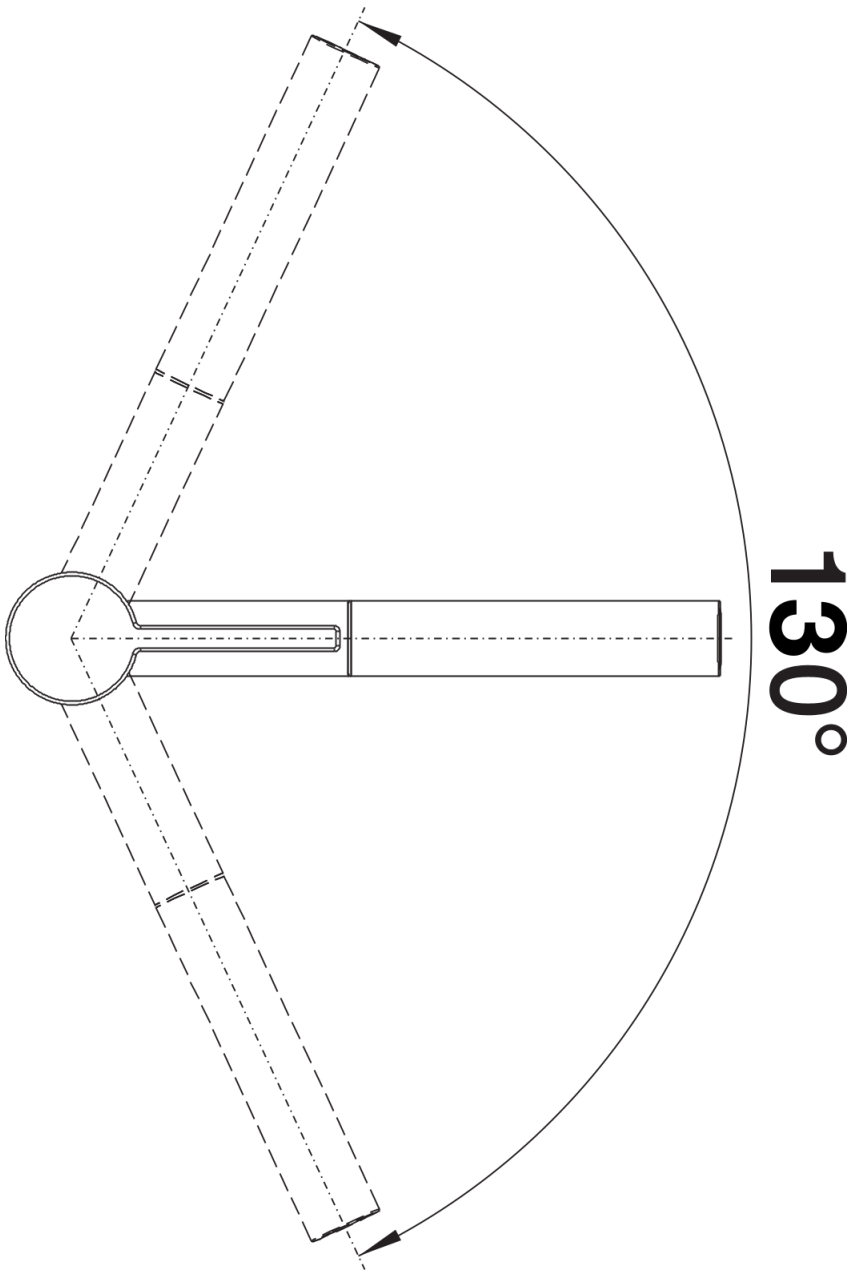
## Scope of supply

---

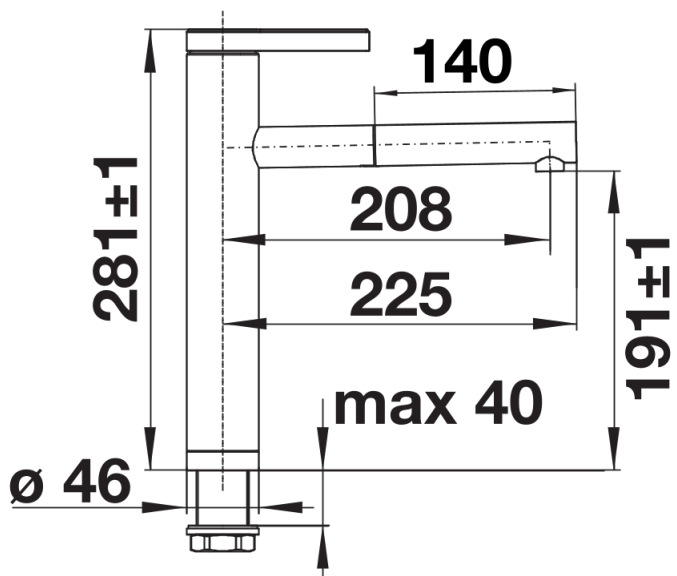
- Top lever operation
- Ø 35 mm tap hole required
- Ceramic disc cartridge
- 3/8" flexible connection pipes with a length of 450 mm for particularly secure installation
- Requires balanced high pressure supply only, minimum 1.0 bar
- Fit metal stabilising bracket if required, item No. 513383

## Details

---



Swivel range



Side view