

Product information sheet LINEE-S

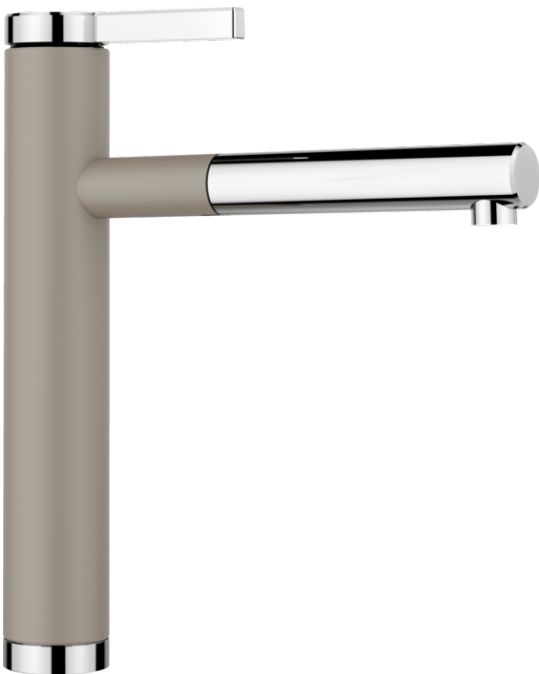
Item no. 518446

Benefits



- Extendable spray in high-quality metal finish
- Silgranit-look colour version matching the Silgranit sinks and bowls

Colours



Available colours:

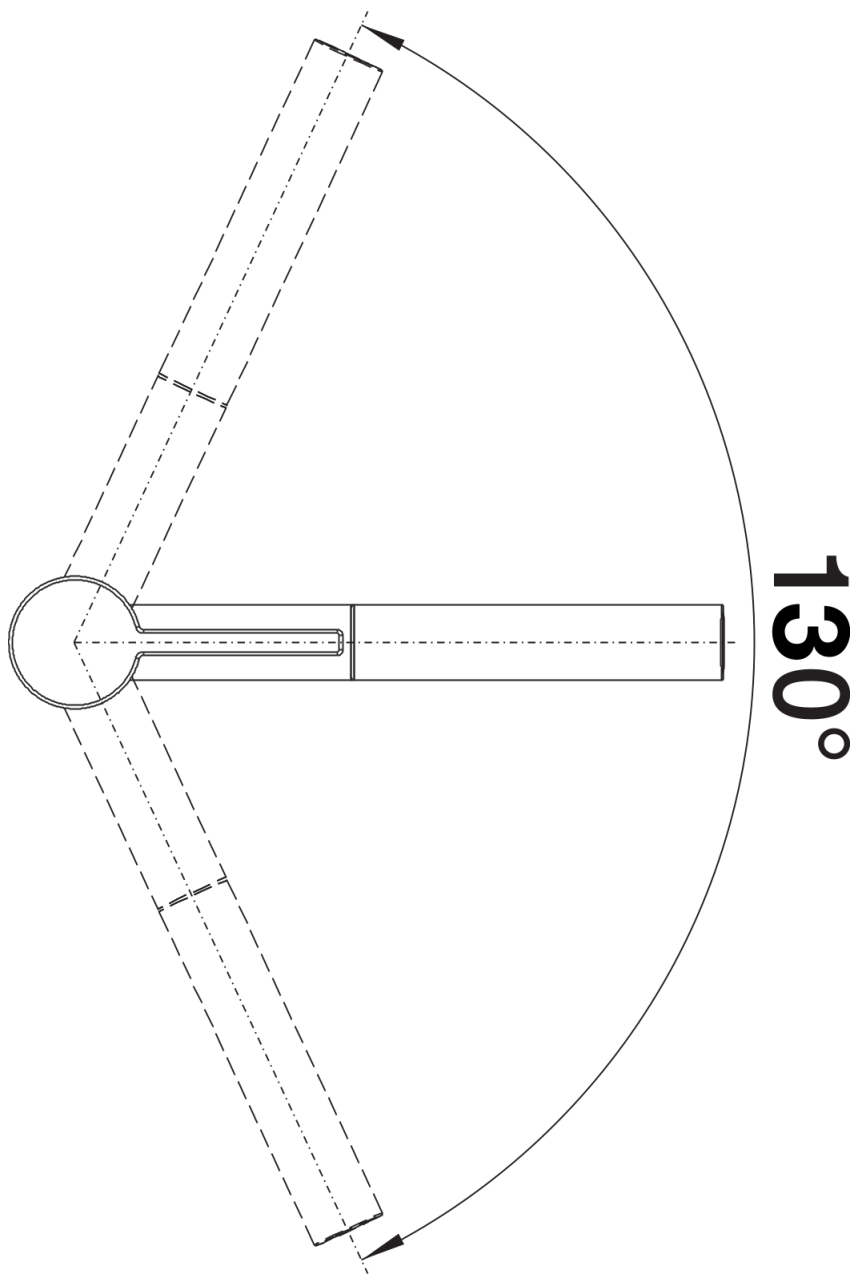
black/chrome
anthracite/chrome
rock grey/chrome
volcano grey/chrome
white/chrome
soft white/chrome
tartufo/chrome
coffee/chrome

SILGRANIT Look dual finish tartufo/chrome

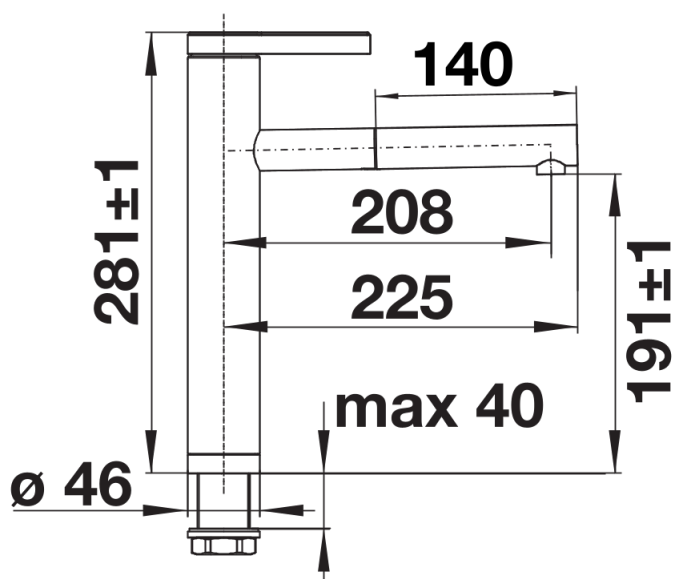
Scope of supply

- 130° swivel spout for greater reach
- Ø 35 mm tap hole required
- With ceramic disk cartridge
- Patented jet regulator for markedly reduced scaling
- Spray made of metal
- Metal-sheathed spray hose
- Hose weight for reliable retraction
- Flexible connector pipes, 500 mm long and 3/8" nut
- Stabilisation plate to increase the stability of the tap when fitted in stainless steel sinks
- With non-return valve and thus guaranteed against reflux in accordance with EN 1717

Details



Swivel range



Side view